



2025-2026

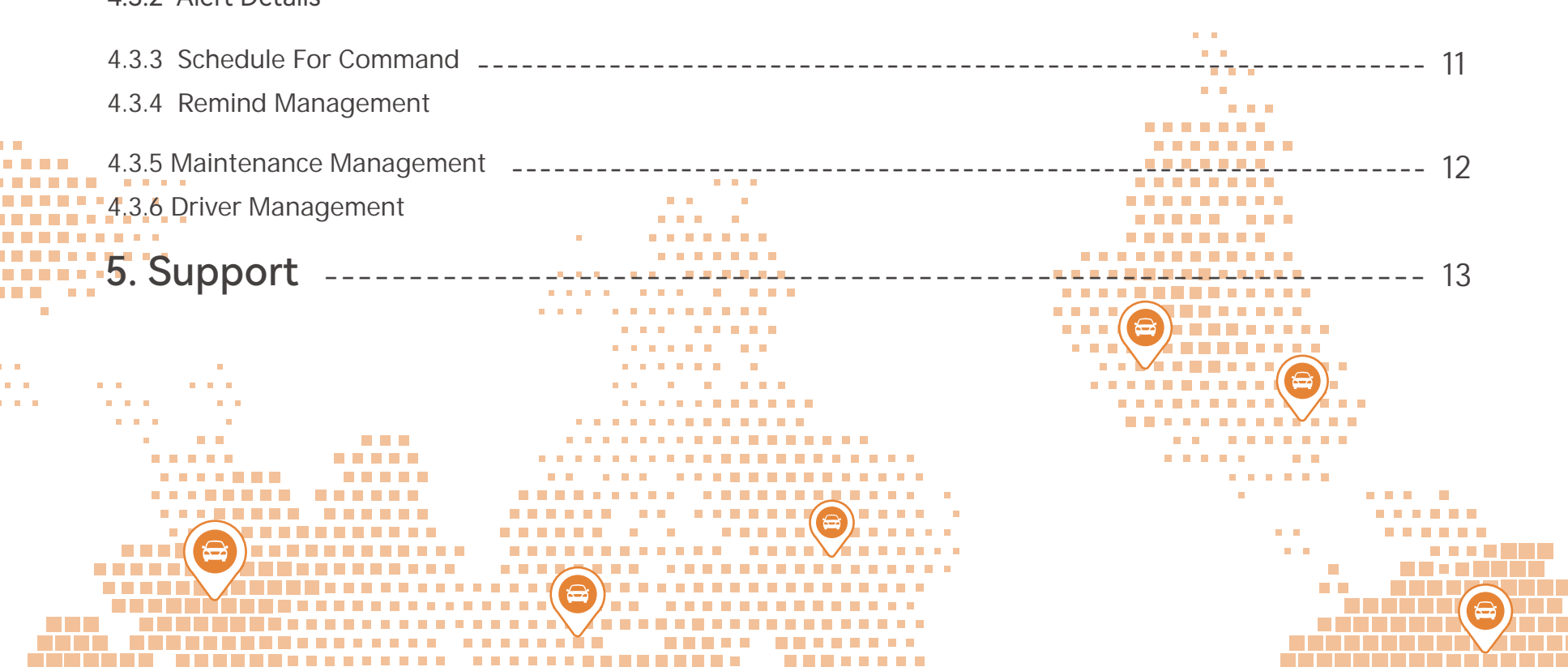
GPS Platform Manual

Professional tracking and telematics platform



Contents

1. Platform Overview	1
2. Monitor	
2.1 Monitor Management	1
2.2 Real-time Tracking	2
2.3 History Playback	
2.4 Command	3
2.5 Geo-fence	
2.6 Device Settings	4
2.7 Share Location	
2.8 Street View	5
2.9 Input/Output Settings	
3. Map Tools	
3.1 Distance Measurement	6
3.2 Area Measurement	
3.3 Real-Time Traffic Conditions	7
3.4 Map Settings	
3.5 POI Tool	8
3.6 Route Deviation	
4. Report Functions	
4.1 Reports Overview	9
4.2 Schedule Reports	
4.3 Manage Device	
4.3.1 Device Settings	10
4.3.2 Alert Details	
4.3.3 Schedule For Command	11
4.3.4 Remind Management	
4.3.5 Maintenance Management	12
4.3.6 Driver Management	
5. Support	13

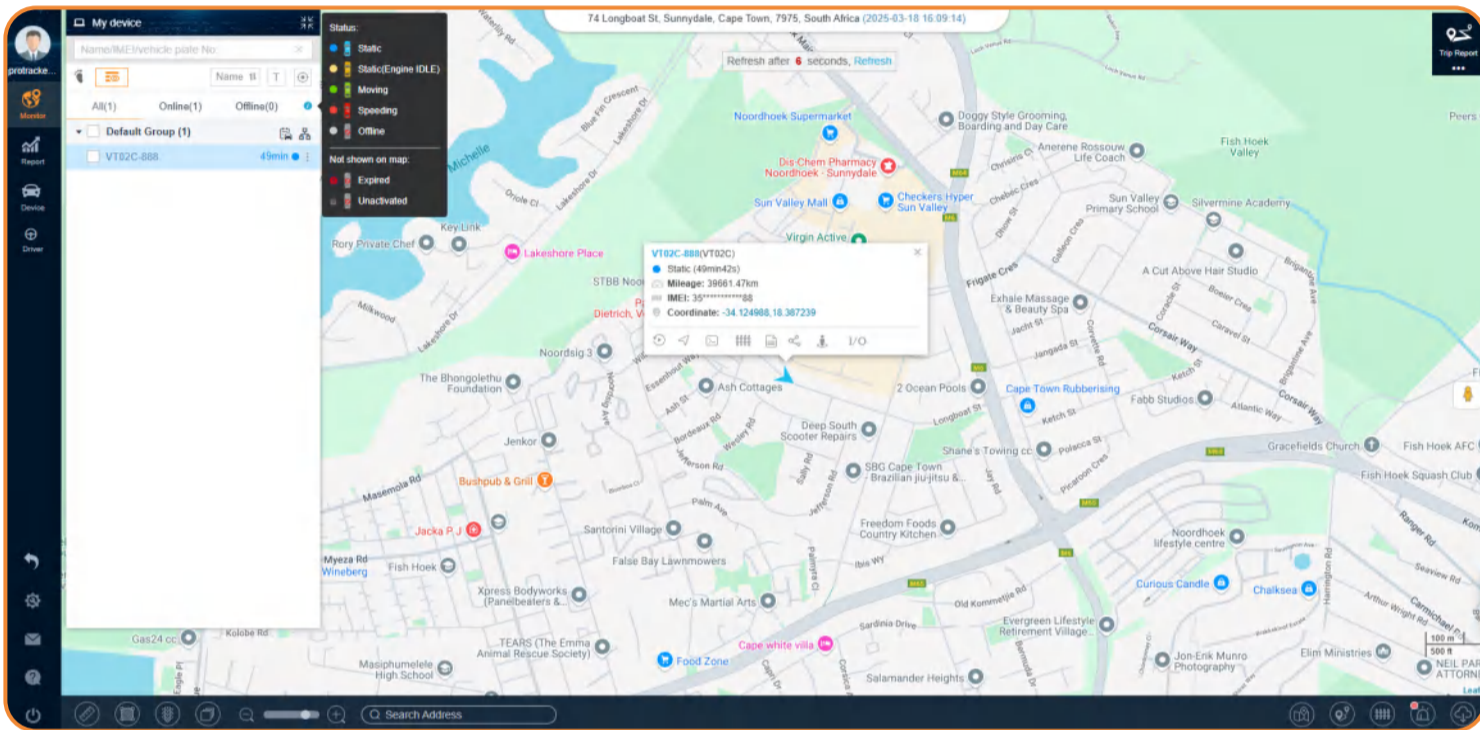


1. Platform Overview

When purchasing services, users will receive their account from the distributor. After logging in, it is essential to provide an **email address in the personal profile**. This email will be crucial for recovering the account password in case it is forgotten. The platform supports multiple device types, allowing users to simultaneously view the real-time location of multiple devices under the same account. Users can also review historical routes, check alert information, and access statistical reports.

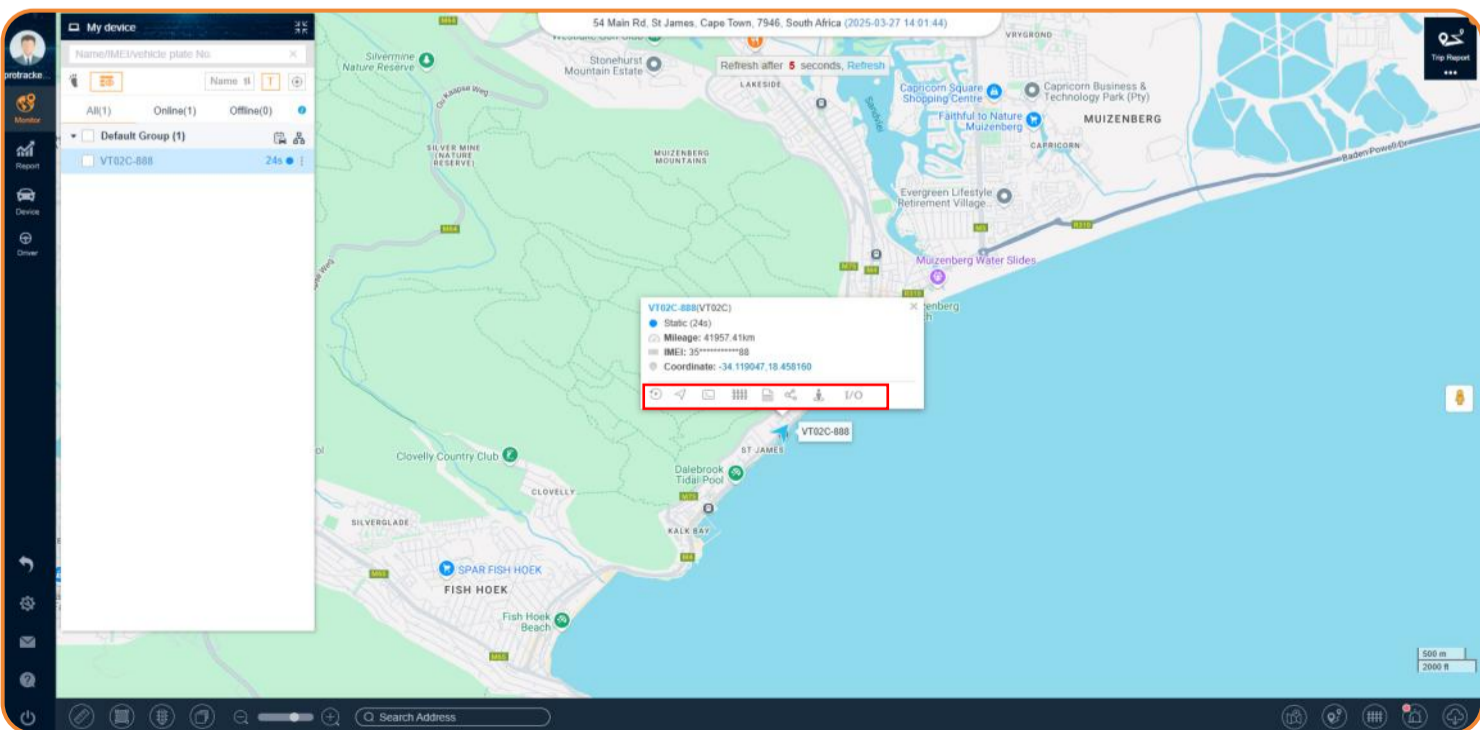
2. Monitor

After logging into the account, you can view the overview of the Monitor page, including the device list, the current real-time location of the devices, and more.



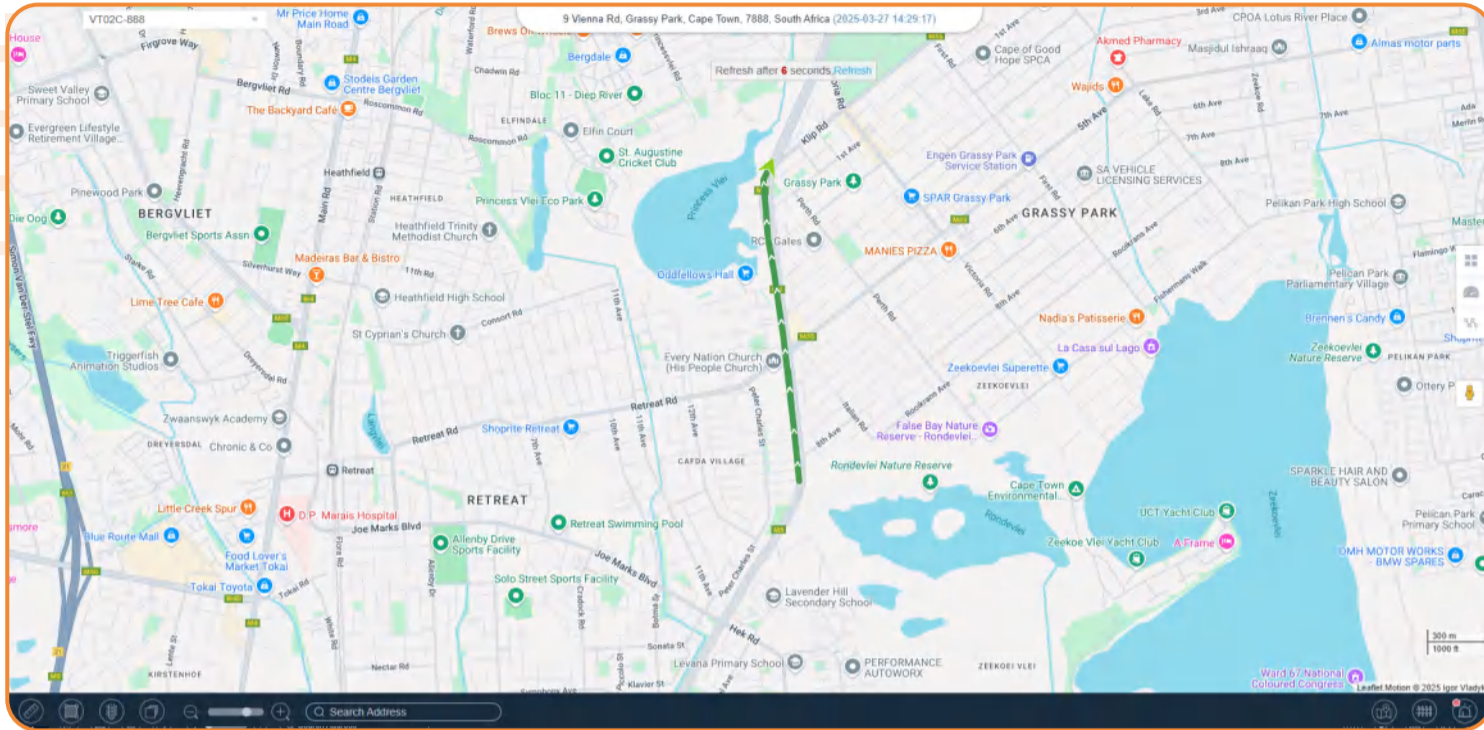
2.1 Monitor Management

When selecting a target device from the list, a device information box will appear. There are several common used functions through the quick icons.



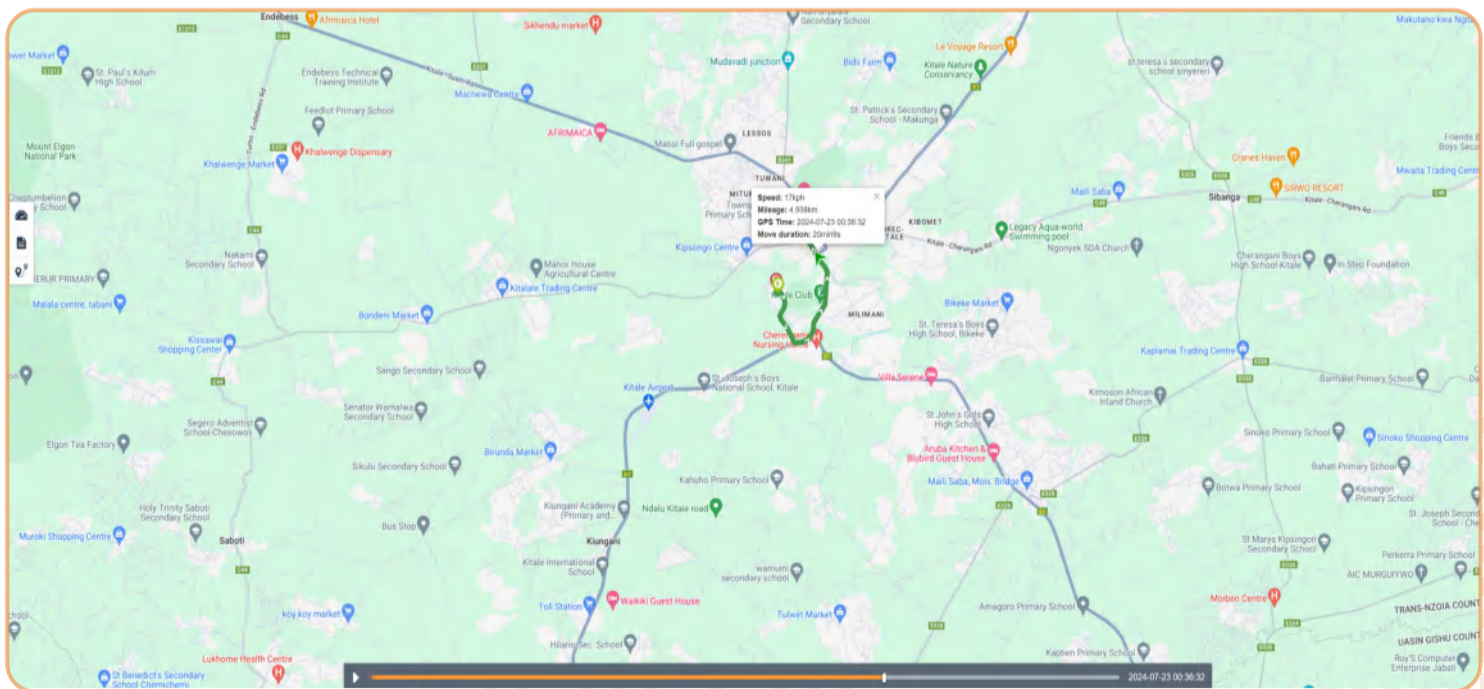
2.2 Real-time Tracking

Monitor the real-time movements of the selected device, with the screen automatically locking onto and following the device as it moves. This feature supports monitoring up to 4 devices simultaneously.



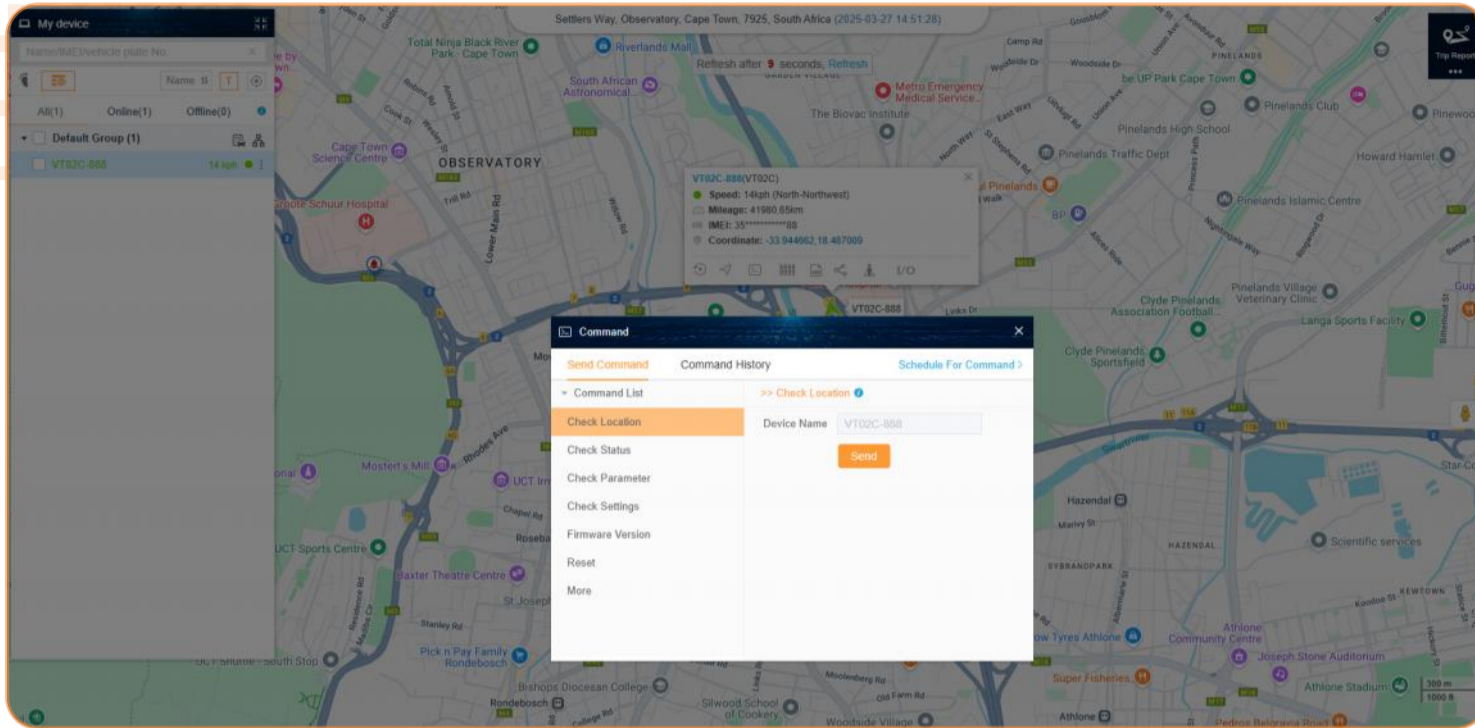
2.3 History Playback

The platform will keep 3 months history data for playback. Users can download the history data and store by themselves. If users need longer than 3 months history, can apply for longer storage such as 1 year or 2 years.



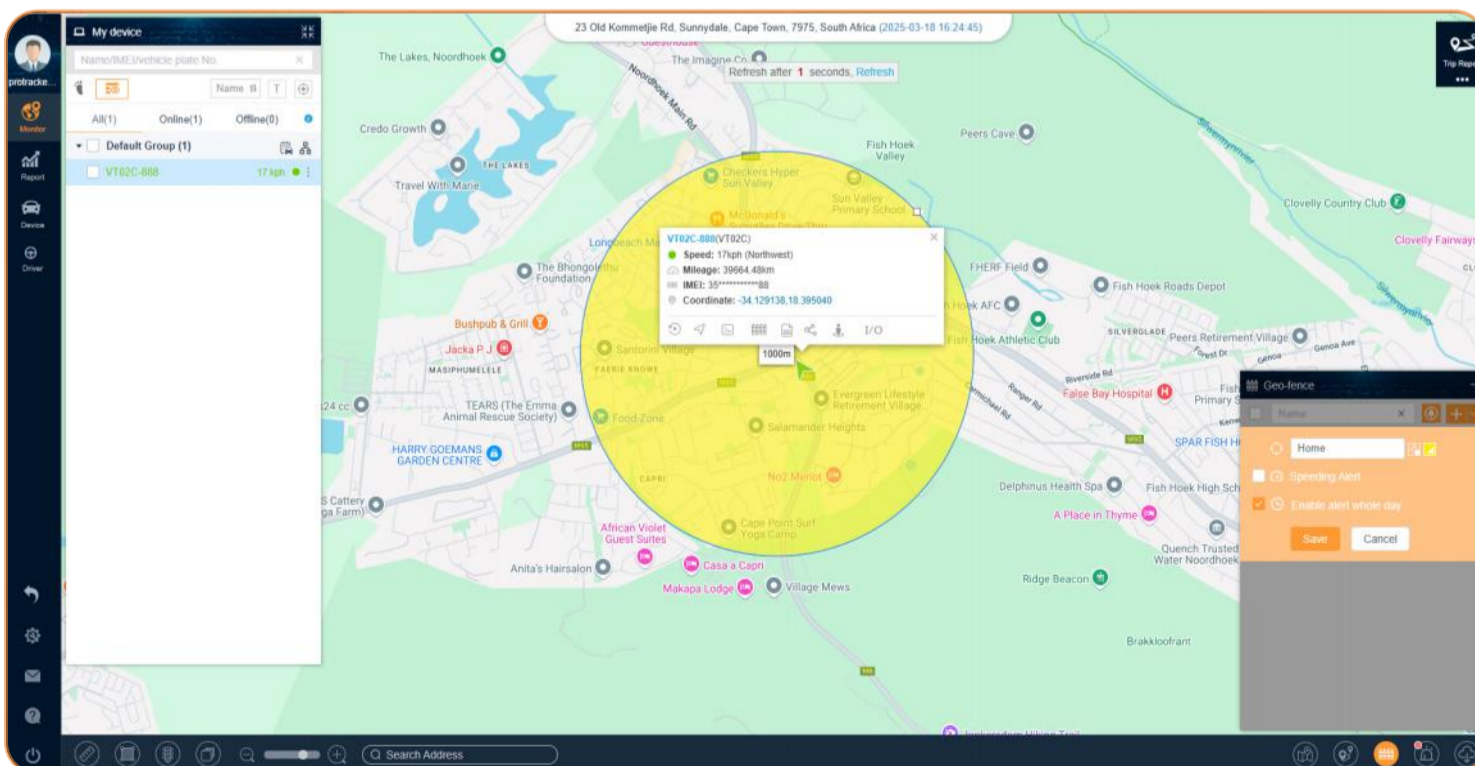
2.4 Command

Platform commands can be used to query device status, parameters, and more. They can also remotely control devices. Need to attention that different devices may have variations in commands. Therefore, the device's **Communication Protocol Document** and **Command List Document** from the **User Manual** is essential information.



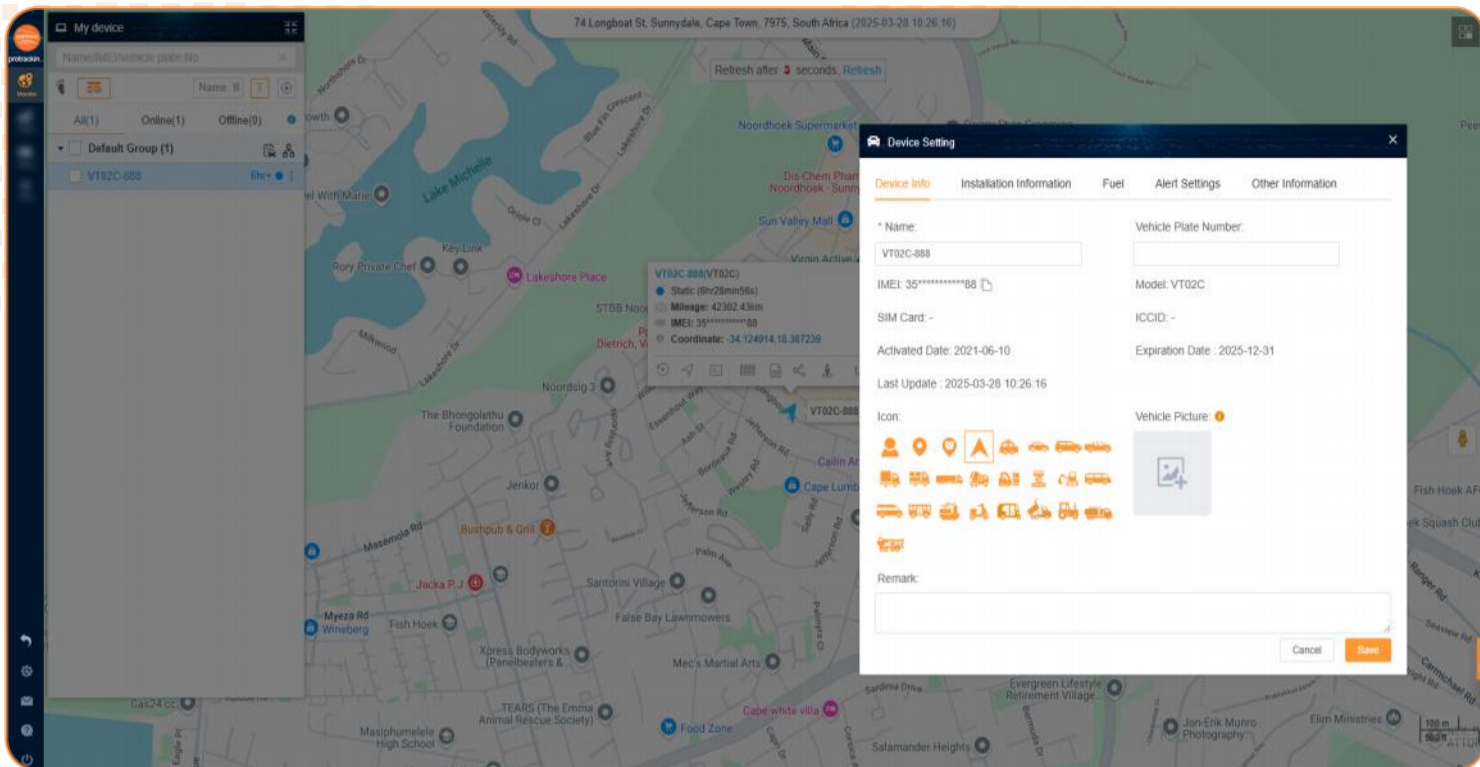
2.5 Geo-fence

Quickly create a circular geofence based on the current device location. Geofences are virtual boundaries drawn on the map, allowing users to trigger alerts when entering or leaving the designated area. Geofences can be conveniently managed in the bottom-right corner of the interface.



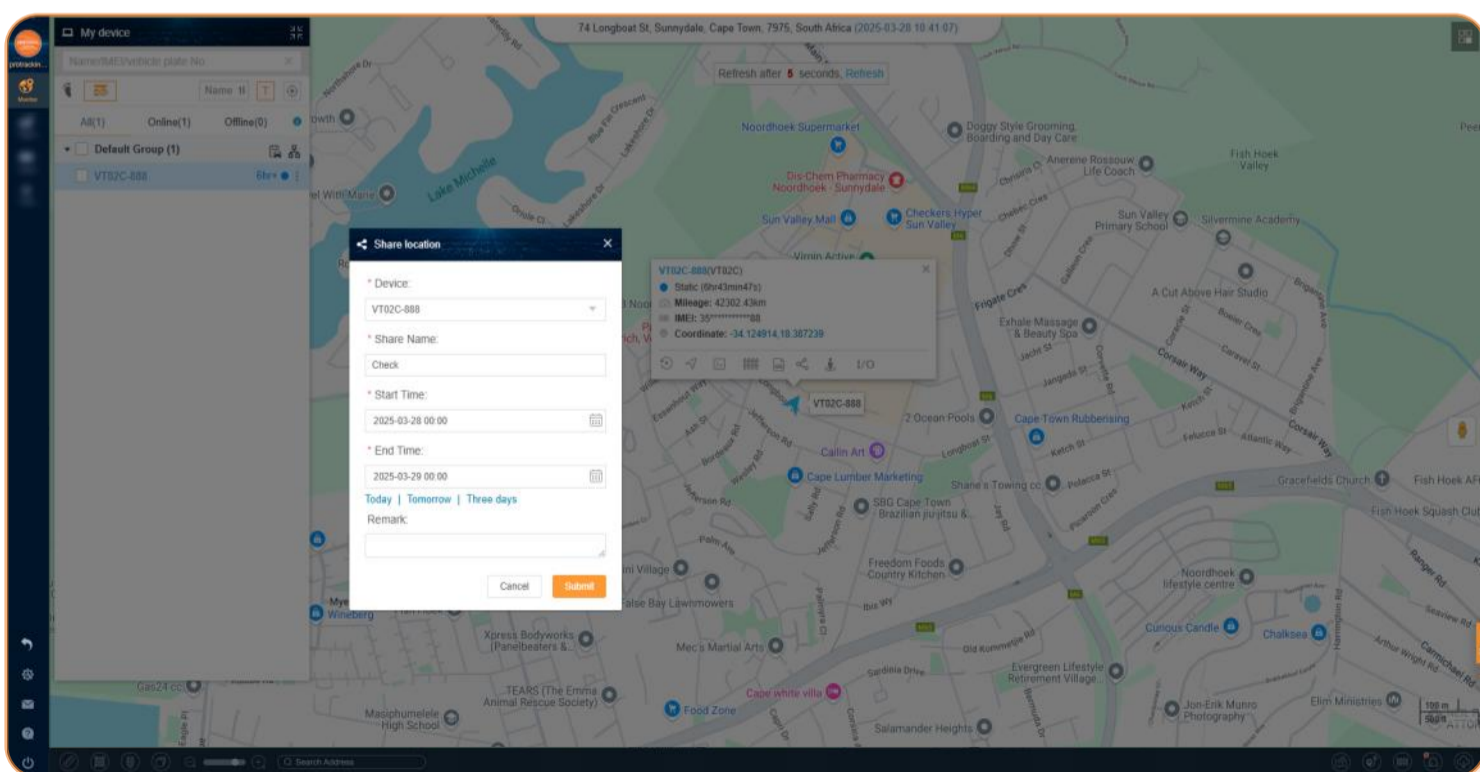
2.6 Device Settings

View and edit device information.



2.7 Share Location

Share the device's location by selecting the sharing time period. Users who receive the shared location link can view the real-time location without needing to log in to an account.



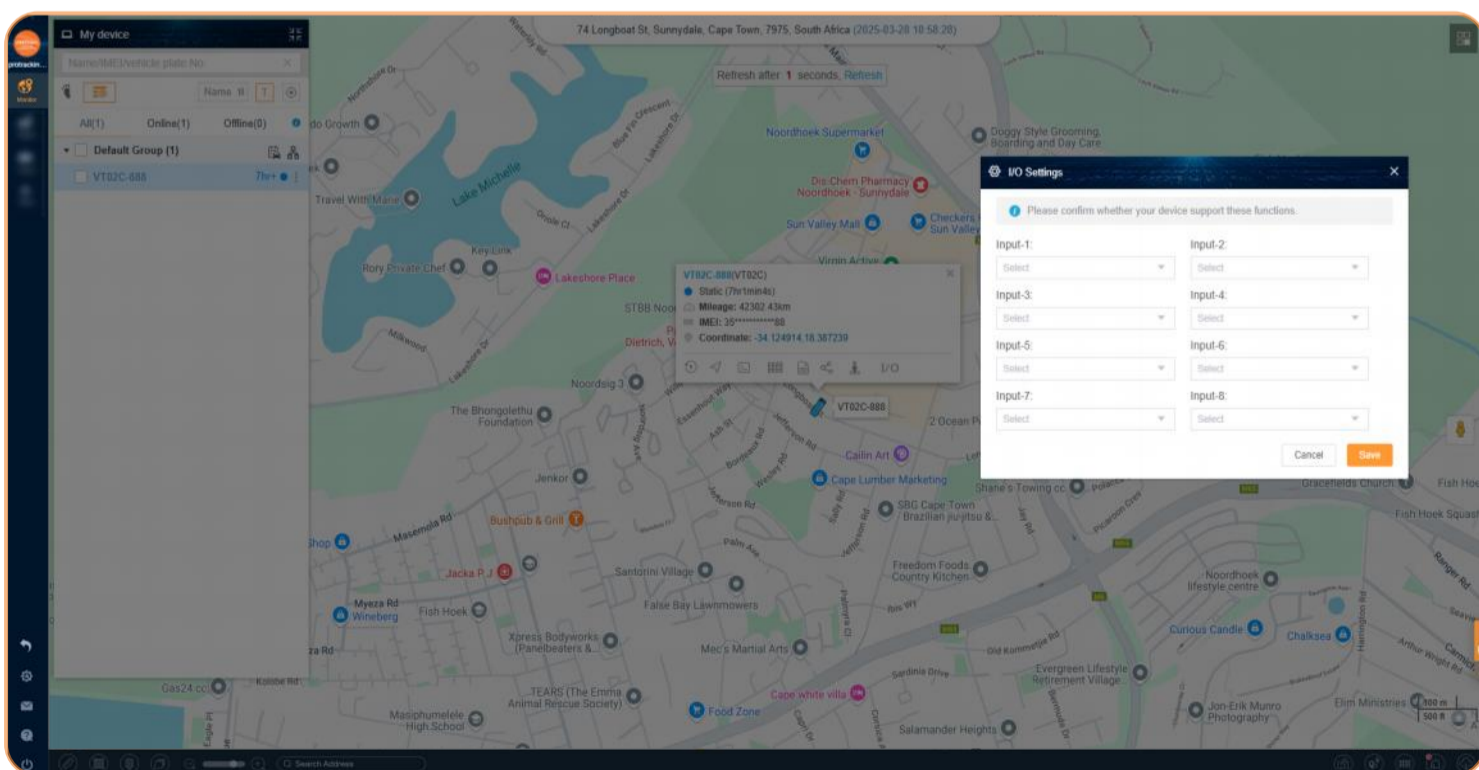
2.8 Street View

Users can view the nearby surroundings of the device's location using Google Maps Street View if the street view is available.



2.9 Input/Output Settings

Some devices feature multiple I/O (input/output) functionality, allowing users to customize the content of the serial ports based on their specific installations. For example, this customization can correspond to functions such as air conditioning status detection, vehicle door status detection, engine status detection, and more.

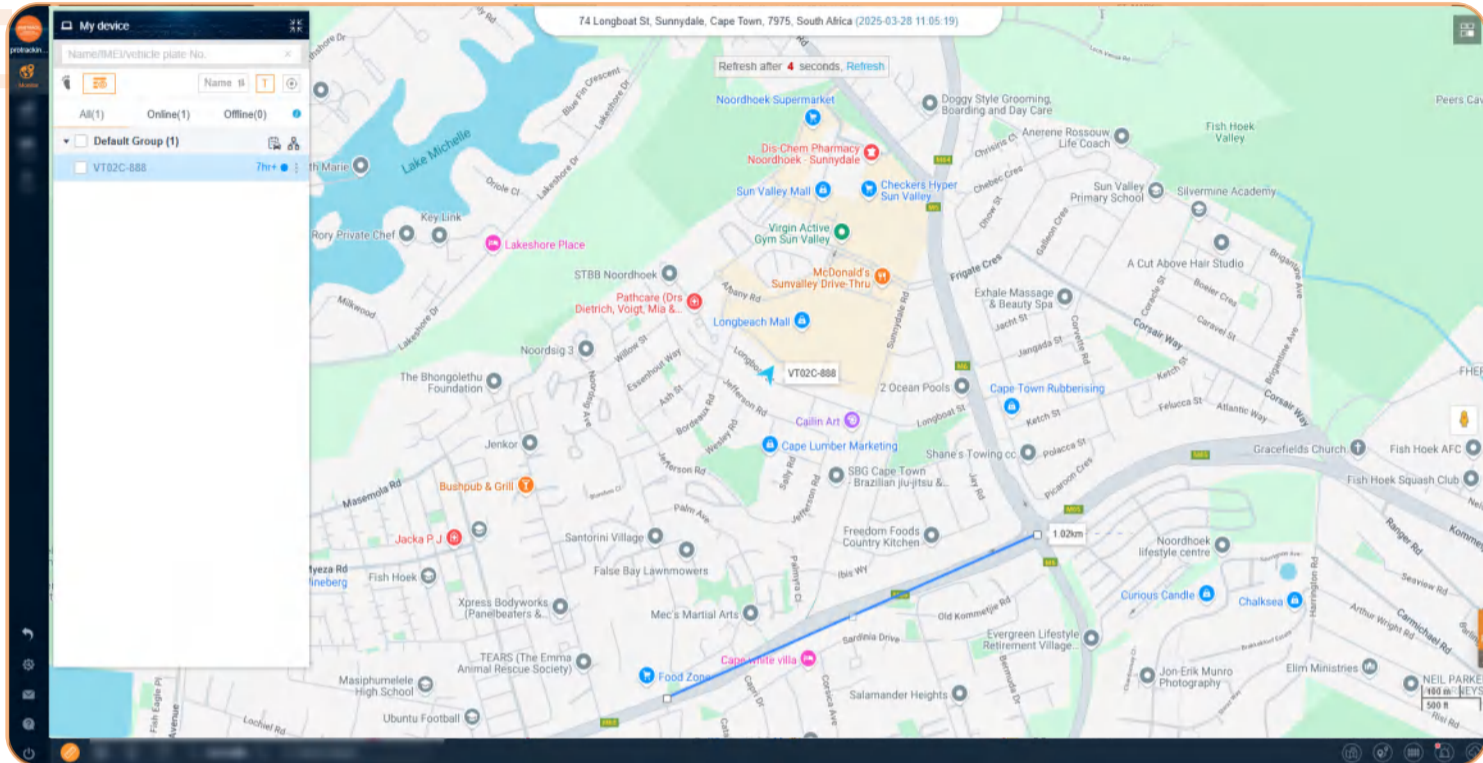


3. Map Tools

The monitoring interface includes various map tools to facilitate users in conducting measurements and calculations.

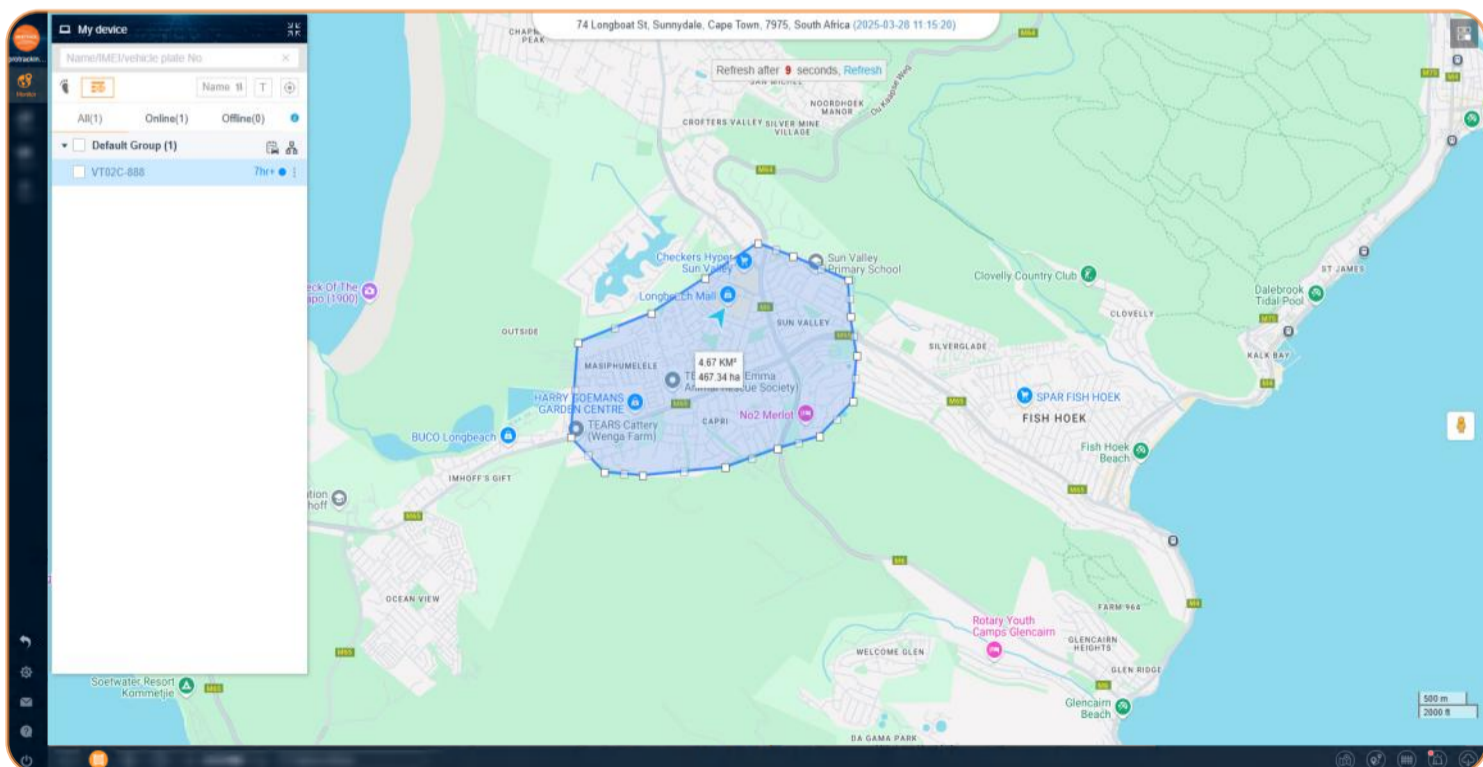
3.1 Distance Measurement

The distance measurement tool allows users to calculate road distances by plotting points on the map.



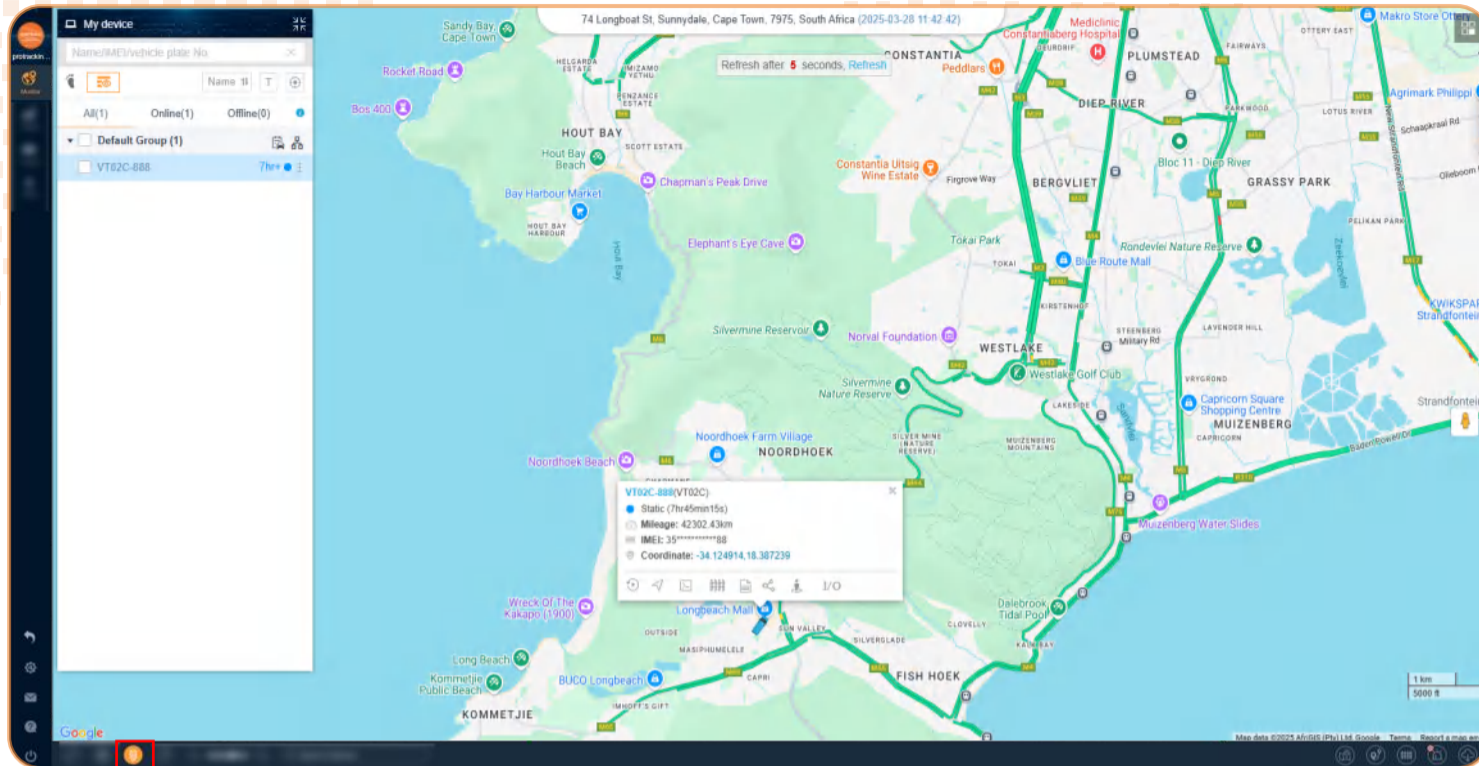
3.2 Area Measurement

The area measurement tool allows users to calculate the area of a region by plotting points on the map.



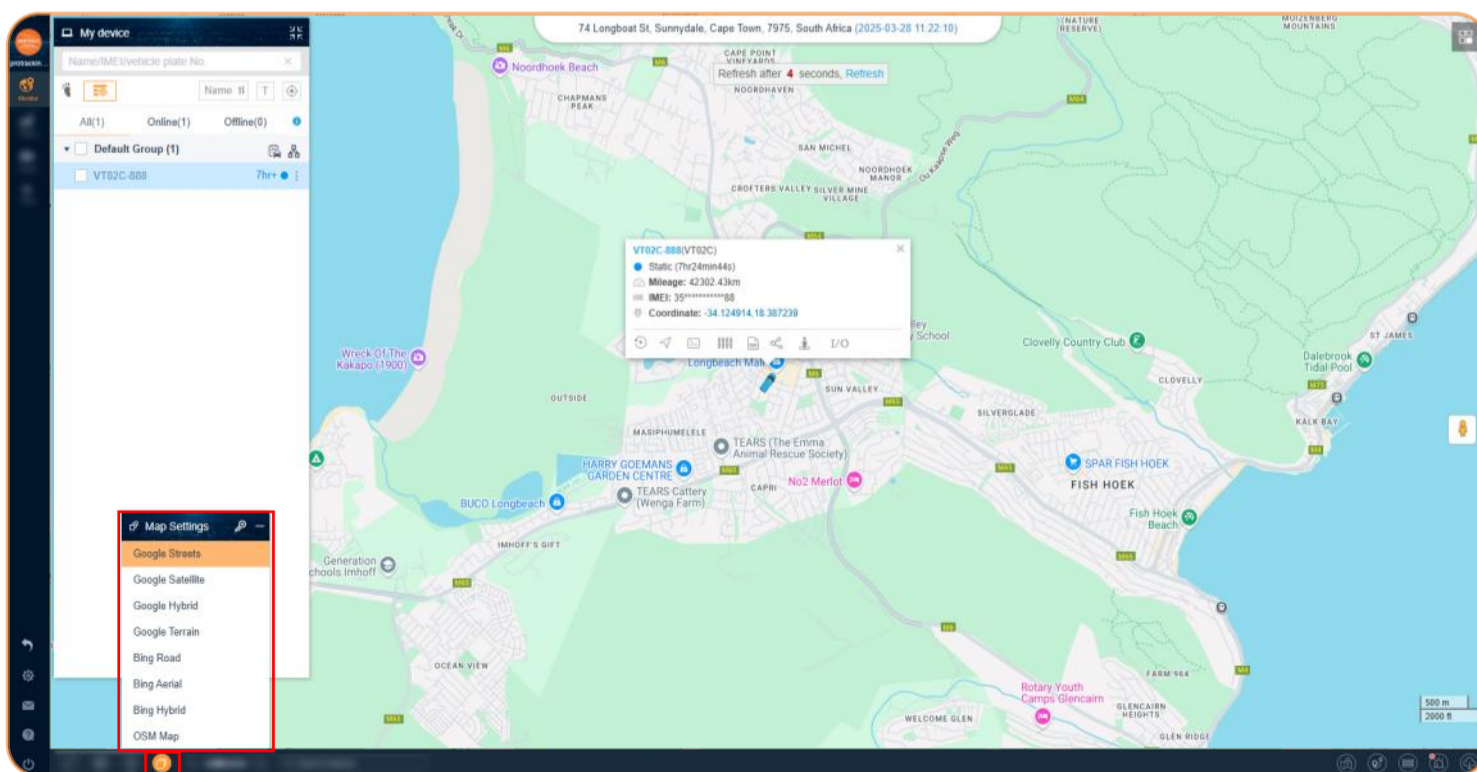
3.3 Real-Time Traffic Conditions

Users can manually toggle real-time traffic conditions on and off.



3.4 Map Settings

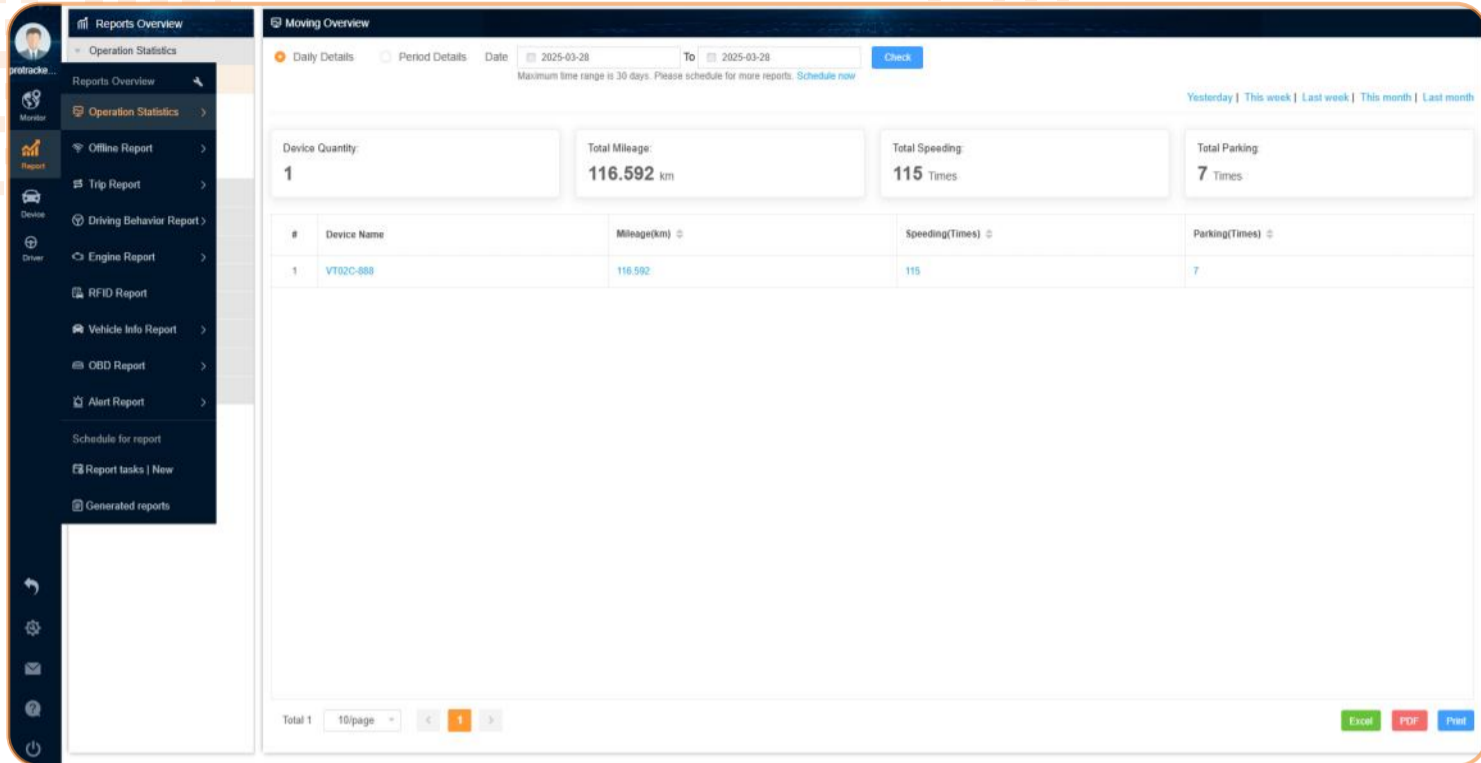
User can manually change the default map that is used.



4. Report Functions

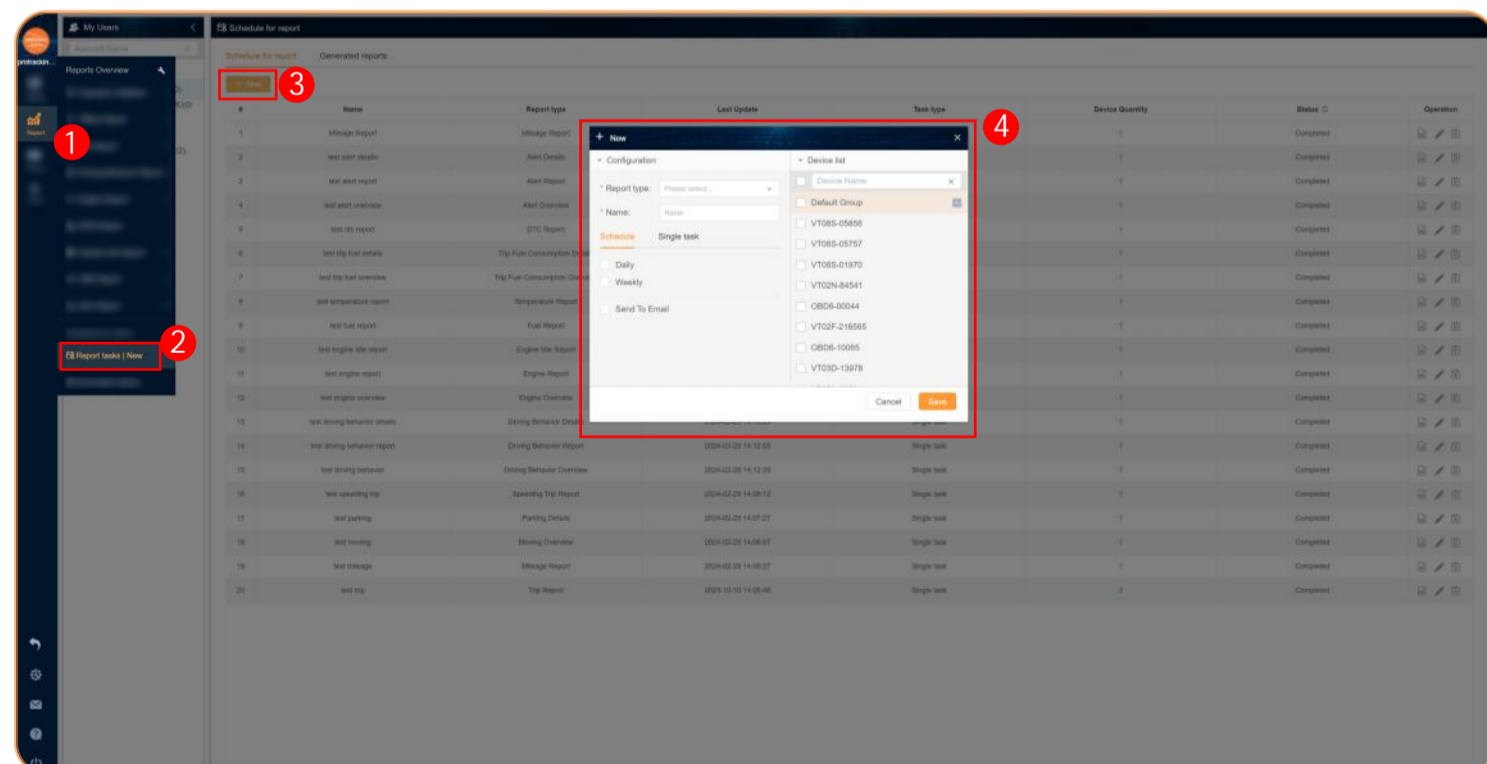
4.1 Reports Overview

Select the report type and target account or device to view the report.



4.2 Schedule Reports

Through the "Report" submenu, configure automatic report generation or create ad-hoc statistical reports as needed, facilitating daily management.

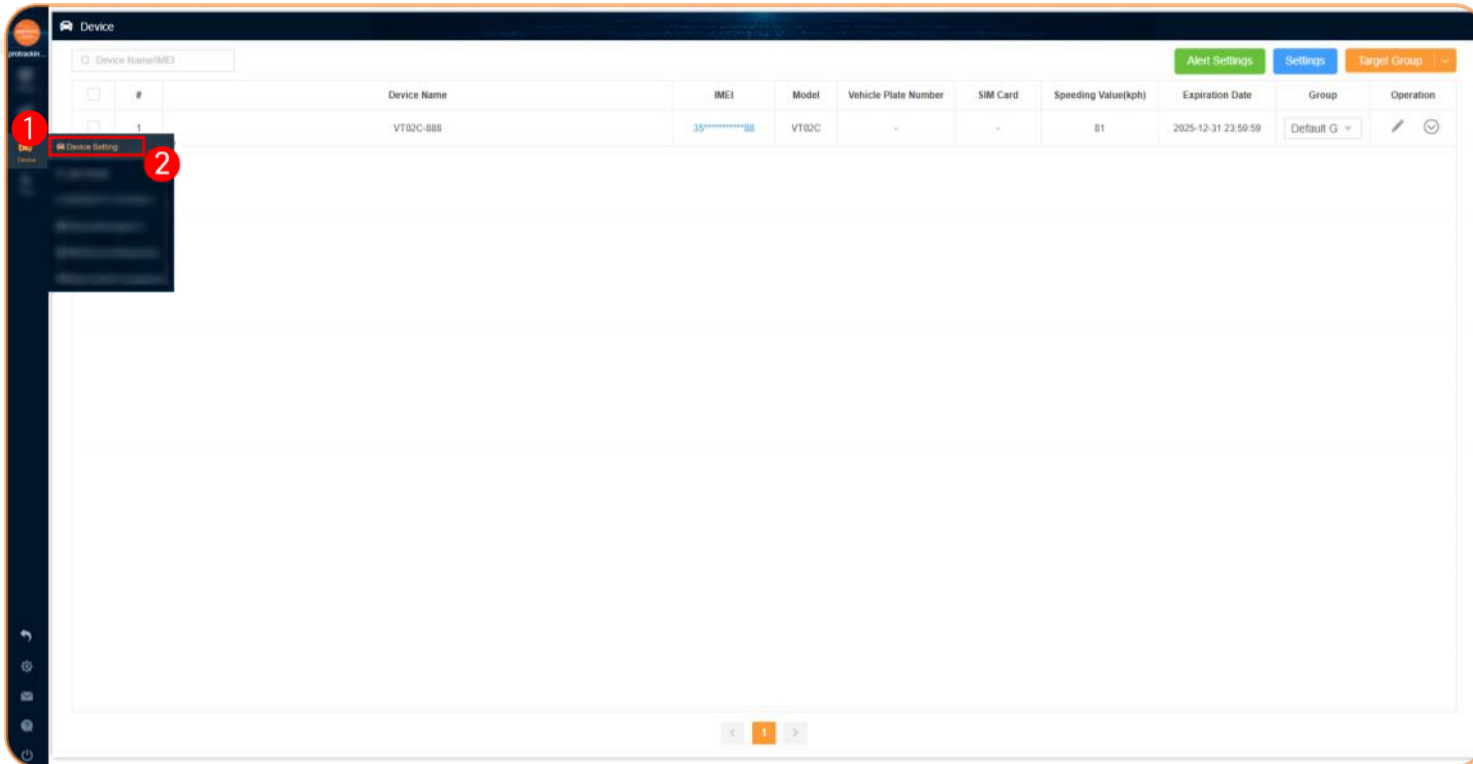


4.3 Manage Device

In the monitoring interface's left menu, there are management functions based on each device. Under this menu, there are following quick functions.

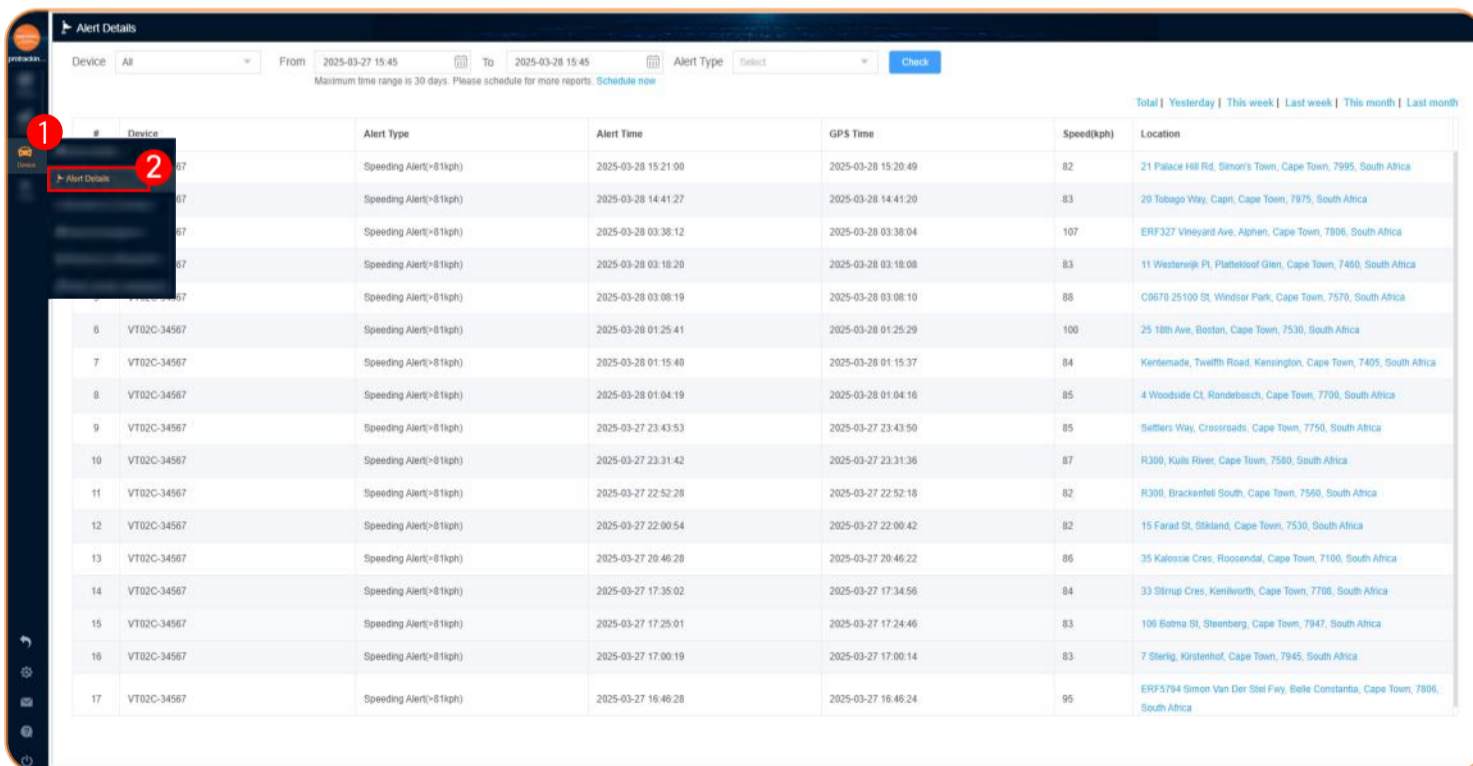
4.3.1 Device Settings

In this interface, users can perform device grouping, information registration, and configuration of default settings.



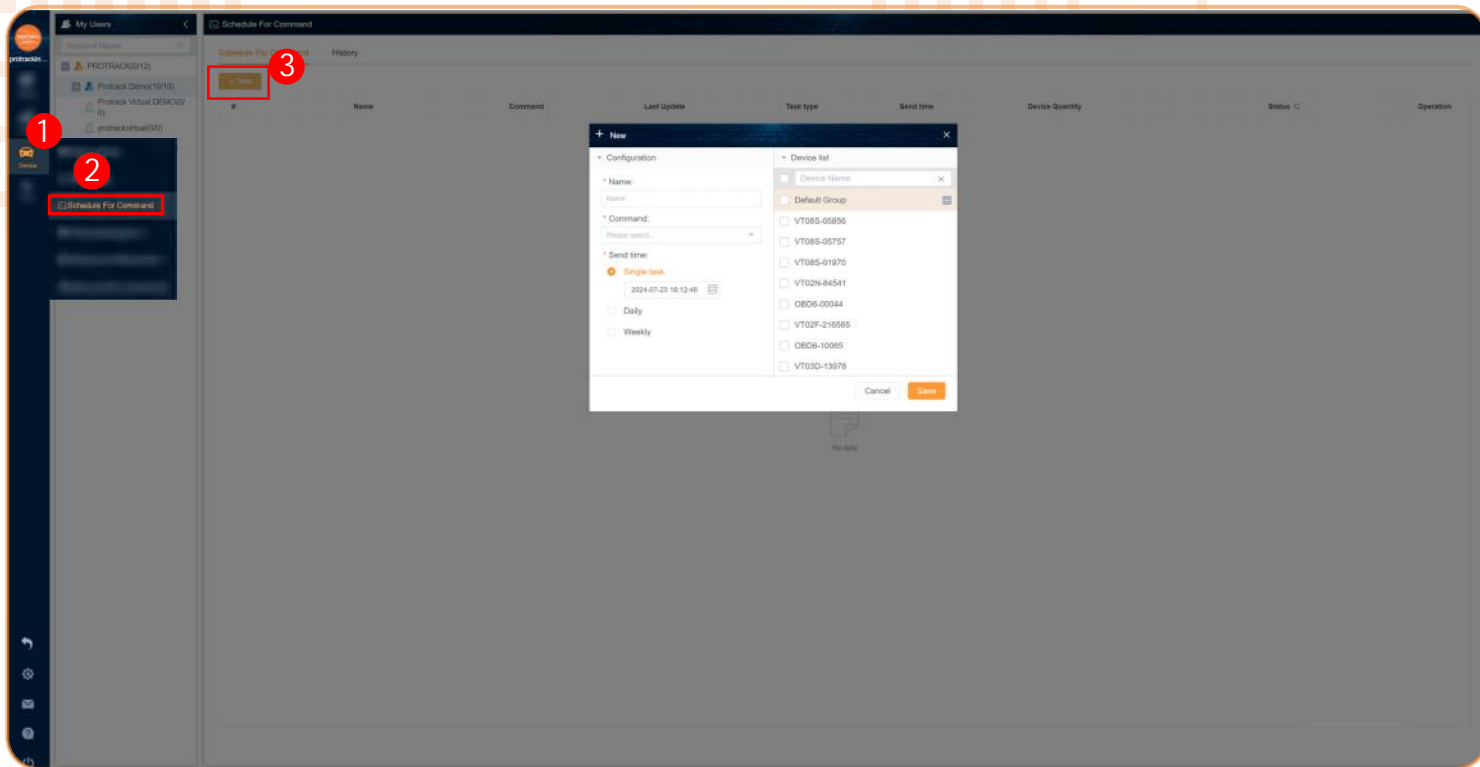
4.3.2 Alert Details

View alert details based on device, trigger time, and type of alert.



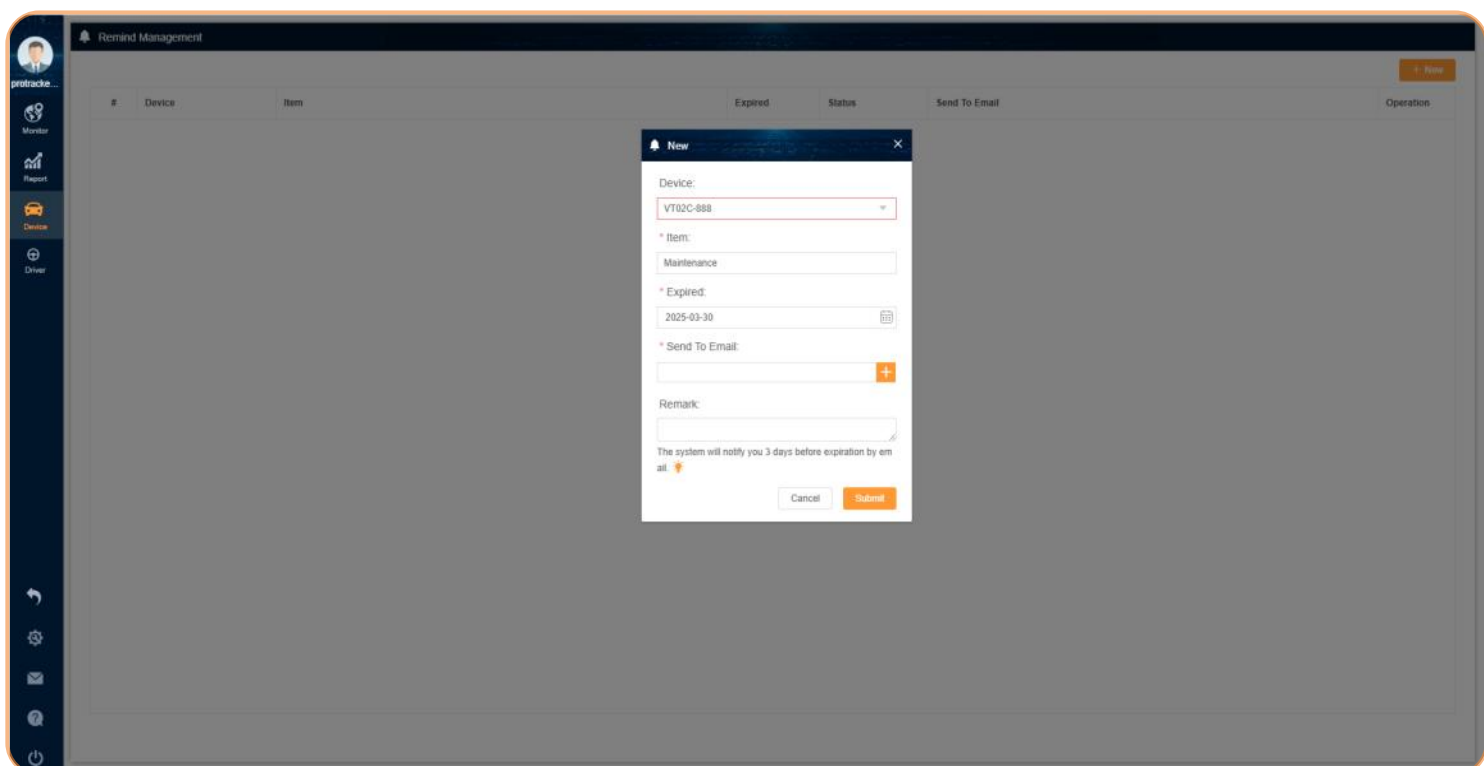
4.3.3 Schedule For Command

Scheduled commands can be created to achieve specific management purposes, such as scheduled vehicle locking or unlocking. To configure these settings, users must input the password of the currently logged-in account.



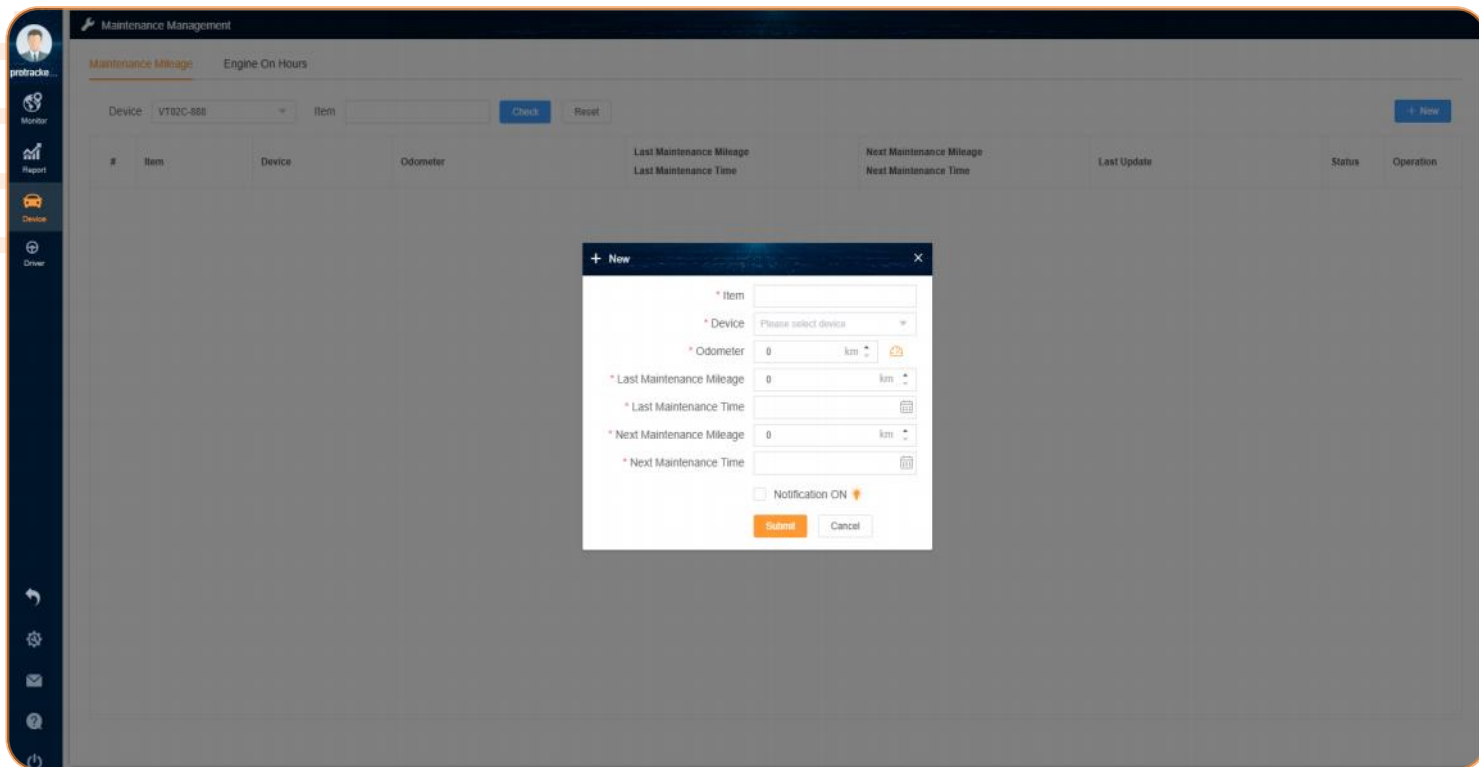
4.3.4 Remind Management

Users can set up custom expiration reminders, such as reminders for device recharges or SIM card recharges.



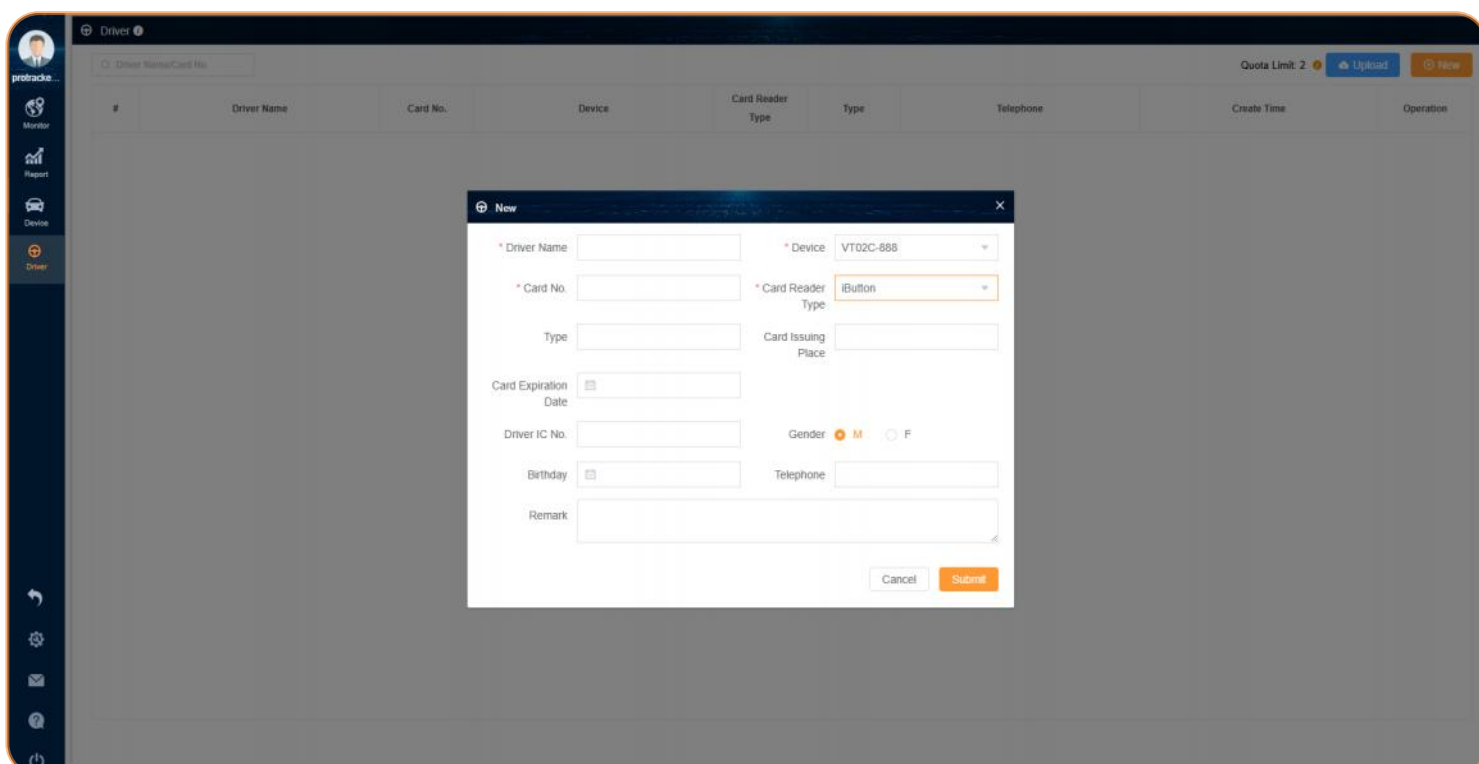
4.3.5 Maintenance Management

Automated maintenance reminders can be set up by entering vehicle dashboard mileage, maintenance intervals, and adding the next scheduled maintenance mileage and time.



4.3.6 Driver Management

By entering driver information in advance and utilizing the device's driver recognition feature, reports can be generated on vehicle usage by drivers, which facilitates fleet management.



5. Support

Users can access technical support or check supplier information for technical services through the menu in the bottom left corner.

